



SN50S5-ST

Air Stapler BCS5 Series



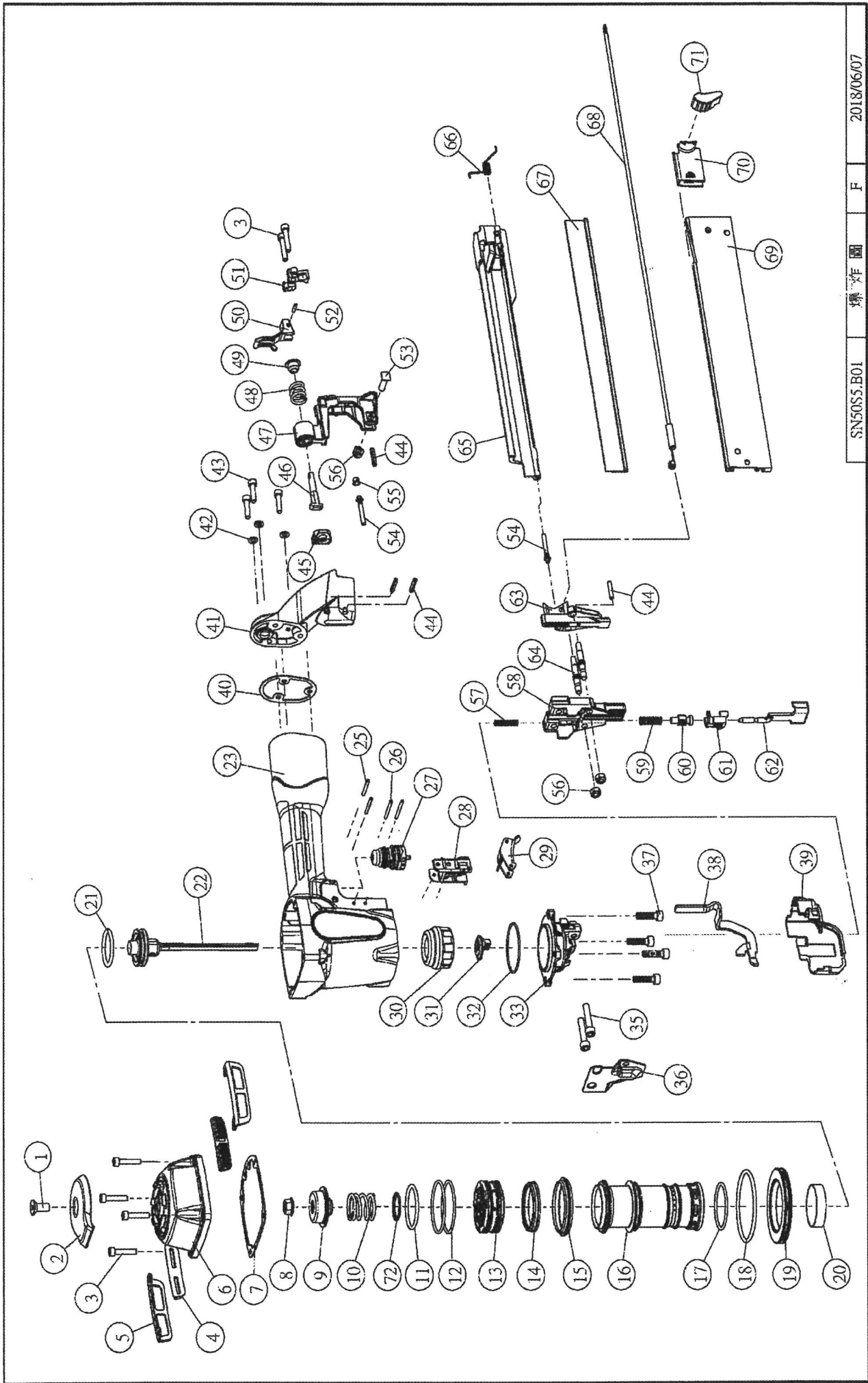
OPERATING & MAINTENANCE MANUAL



WARNING

BEFORE USING THIS TOOL, STUDY THIS MANUAL TO ENSURE SAFETY WARNING AND INSTRUCTIONS.

KEEP THESE INSTRUCTIONS WITH THE TOOL FOR FUTURE REFERENCE.



NOTE: When ordering spare parts, please state the part name and part number.

Item	Part NO.	Description	Qty	Item	Part NO.	Description	Qty	Item	Part NO.	Description	Qty
1	100930	Screw M8	1	35	100127	Screw M6	2	67	101000	Cover, Core	1
2	100931	Deflector	1	36	100988	Cover, Contact Arm	1	68	101001	Spring, Pusher Assy.	1
3	100933	Screw M5 x 25	6	37	103168	Screw M6	4	69	101004	Core Assembly	1
4	100927	Rubber Protector	2	38	100964	Arm, Upper Contact Assy.	1	70	101002	Pusher	1
5	100953	Protector	2	39	100965	Cover, Contact Arm Assy.	1	71	101003	Handle, Pusher	1
6	101875	Cap, Cylinder Unit	1	40	100968	Seal, End Cap	1	72	100963	Spring Washer	1
7	100952	Seal, Cylinder Cap	1	41	101876	Cap, Frame End	1	MOQ for items in the following categories is			
8	100936	Nut M8	1	42	100638	Washer	3	10pcs, order quantities under 10pcs for these items			
9	100937	Bumper, Top	1	43	100530	Screw M5 x 20	3	will be adjusted accordingly			
10	100938	Spring, Head Valve	1	44	100978	Spring Pin 4 x 20	4	1. Orings – not included in the oring kits			
11	100940	O-Ring	1	45	100980	Disc, Latch Stop	1	2. Screws, bolts			
12	100941	O-Ring	2	46	100982	Pin, Latch	1	3. Pins - roll pin, solid pins			
13	100939	Valve, Head	1	47	100973	Cap, Magazine End	1	4. Standard washers – not special washers.			
14	100943	Seal, Cylinder	1	48	100975	Spring, Latch Lever	1	5. Nuts			
15	100942	Retainer, Cyl. Sleeve	1	49	100976	Bushing, Spring	1				
16	100945	Cylinder	1	50	100977	Toggle, Magazine	1				
17	100944	O-Ring	1	51	100984	Magazine Stop	1				
18	100947	O-Ring	1	52	100990	Spring Pin 3 x 12	1				
19	100946	Ring, Cylinder Sleeve	1	53	100983	Bolt, Square	1				
20	100948	Seal, Check	1	54	100981	Pin, Magazine Cover	2				
21	101910	O-Ring	1	55	101011	Bearing, Cover Pin	1				
22	100527	Main Piston Unit	1	56	101018	Nut M6	3				
23	101874	Frame, Overmold	1	57	100985	Spring	1				
25	100174	Spring Pin	2	58	100986	Nose	1				
26	100966	Spring Pin	2	59	100989	Spring	1				
27	103955	100063 Trigger Valve Unit(CT)	1	60	100990	Nut, Adjusting	1				
28	103295	Upper Trip Guide Assy	1	61	100991	Adapter	1				
29	100067	Trigger Unit (C.T)	1	62	100992	Arm, Lower Contact	1				
30	100958	Bumper - Bottom(Y)	1	63	100995	Core Tip	1				
31	100959	Driver Guide	1	64	100994	Pin, Nose	2				
32	100643	O-Ring	1	65	100998	Magazine Cover	1				
33	100961	Frame, Bottom	1	66	100999	Spring	1				

“DEPTH OF DRIVE ADJUSTMENT”

The “DEPTH OF DRIVE ADJUSTMENT” feature provides close control of the fastener drive depth; from flush with the work surface to shallow or deep countersink. First, set the air pressure for consistent drive in the specific work as described above, then use the “DEPTH OF DRIVE ADJUSTMENT” to give the desired depth of drive.

TO ADJUST “DEPTH OF DRIVE ADJUSTMENT”:

1. With air pressure set, drive a few fasteners into a representative material sample to determine if adjustment is necessary.
2. If adjustment is required, disconnect air supply.
3. Refer to label on the outside of door for direction to turn adjusting nut. (See illustration)
4. Remove cover mounting nuts, cover and adapter. Observe the orientation of the flats on the adjusting nut. Rotate the adjusting nut to the left to increase fastener drive depth, or to the right to decrease it. Reorient the flats to be same as before. Reinstall adapter, cover and mounting nuts.
5. Before reconnecting air supply, check that trip mechanism parts operate freely with no binding or sticking.
6. Reconnect air supply.

